

GHOSTBUSTERS®*

Ghosts, Ghosts. And more ghosts. They've decided to come out in full force. And they've picked your city to show their stuff in. So who you gonna call?

*® Registered trademark of Columbia Pictures Industries, Inc.
Ghostbusters logo © 1984 Columbia Pictures Industries, Inc.
All Rights Reserved.
Licensed from Activision, Inc.
Ghostbusters music and lyrics written by Ray Parker, Jr.
© 1984 Golden Torch Music Corp. and Raydiola Music Corp.

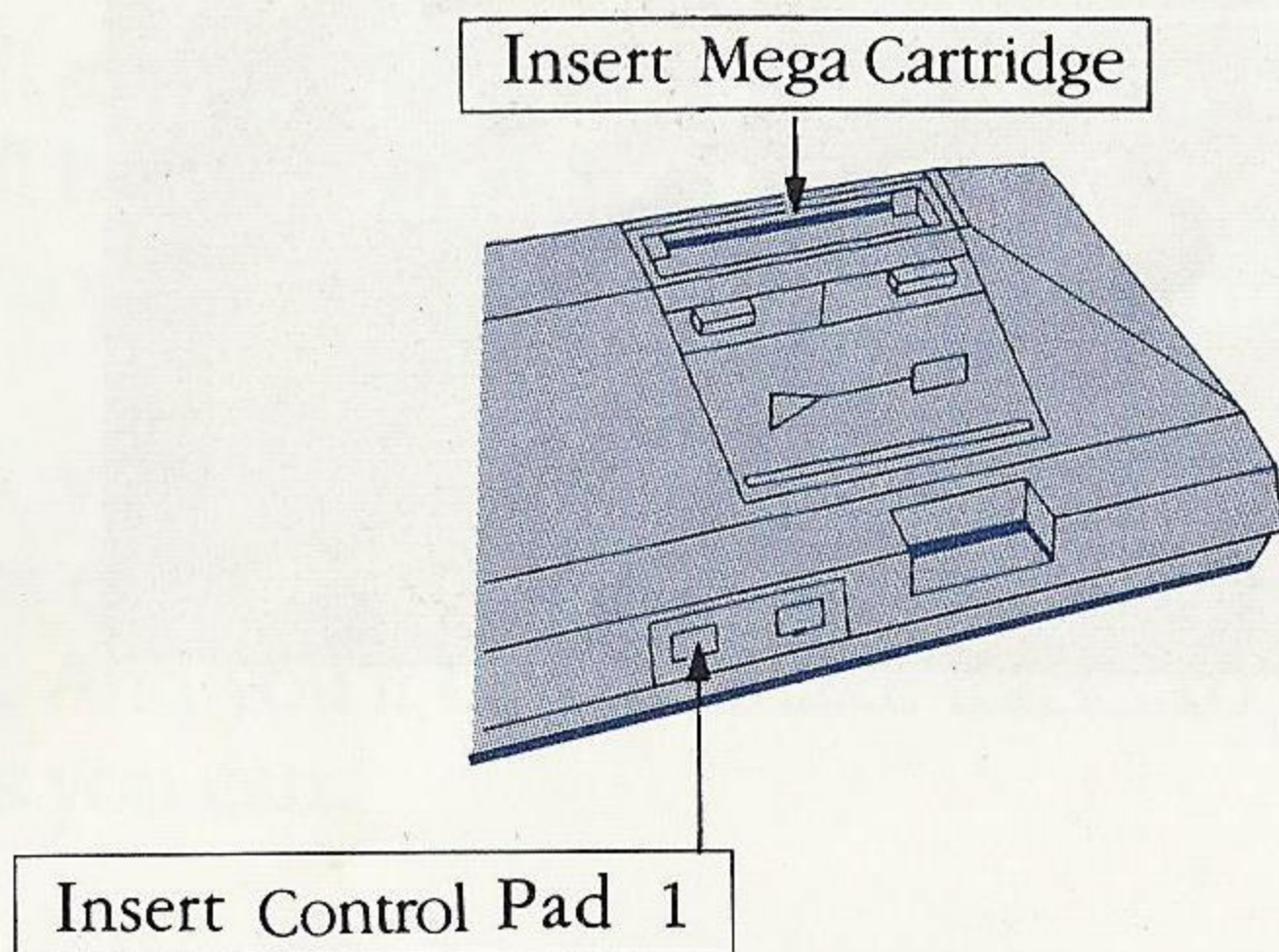


SEGA®

Loading Instructions: Starting Up

1. Make sure the power switch is OFF.
2. Insert the GHOSTBUSTERS™ cartridge into the power base (shown below) as described in your SEGA SYSTEMS™ manual.
3. Insert a control pad into port 1 on the power base.
4. Turn the power switch ON. If nothing appears on screen, recheck cartridge insertion.

IMPORTANT: Always make sure the power base is turned OFF when inserting or removing your Sega cards and cartridges.



Setting up the Game

1. Push **BUTTON 1**
2. Use the **ARROWS** to select either
“NEW GAME START”
OR
“CONTINUE START”
3. Push **BUTTON 1** again

Selecting NEW GAME START – Use this selection for your very first game. Or when you wish to enter new initials.

To enter your initials, use the **ARROWS** to position the cursor, then press **BUTTON 1**. Do this twice. Once for each letter of your initials.



Selecting CONTINUE START -- Select this when you already have a bank account with money in it. First enter your initials as described above. Then enter your account number in the same way you entered your initials.

```

NAME ENTRY
A B C D E F G H I J K L M N
O P Q R S T U V W X Y Z ← →
YOUR INITIAL A . A
YOUR ACCOUNT NUMBER
0 0 0 0 0 0 0 0 0 0
  
```

What's Happening

Busting ghosts is tough. You have to have the right wheels, the right tools and a heck of a lot of nerve. That's why they've picked you to run the business.

You'll start out with \$10,000 in your bank account. You'll have to use part of this money to purchase all the things you'll need.

Then, you'll be given a map of the city. Whenever ghosts enter one of the buildings, the building will blink. And you'll have to make tracks to get there as fast as you can.

Once you reach the building, you'll use your Ion Beams to trap the ghosts. When you get all of them, the scene returns to the map and you start looking for ghosts all over again.

Sometimes you'll have to return to headquarters. To pick up a new man. To recharge your Ion Beam. Or to empty your ghost traps.

When the Marshmallow Man enters the scene, you'll have to drop everything and confront this monstrous mess. Sneak your men past him to enter the temple of Zule.

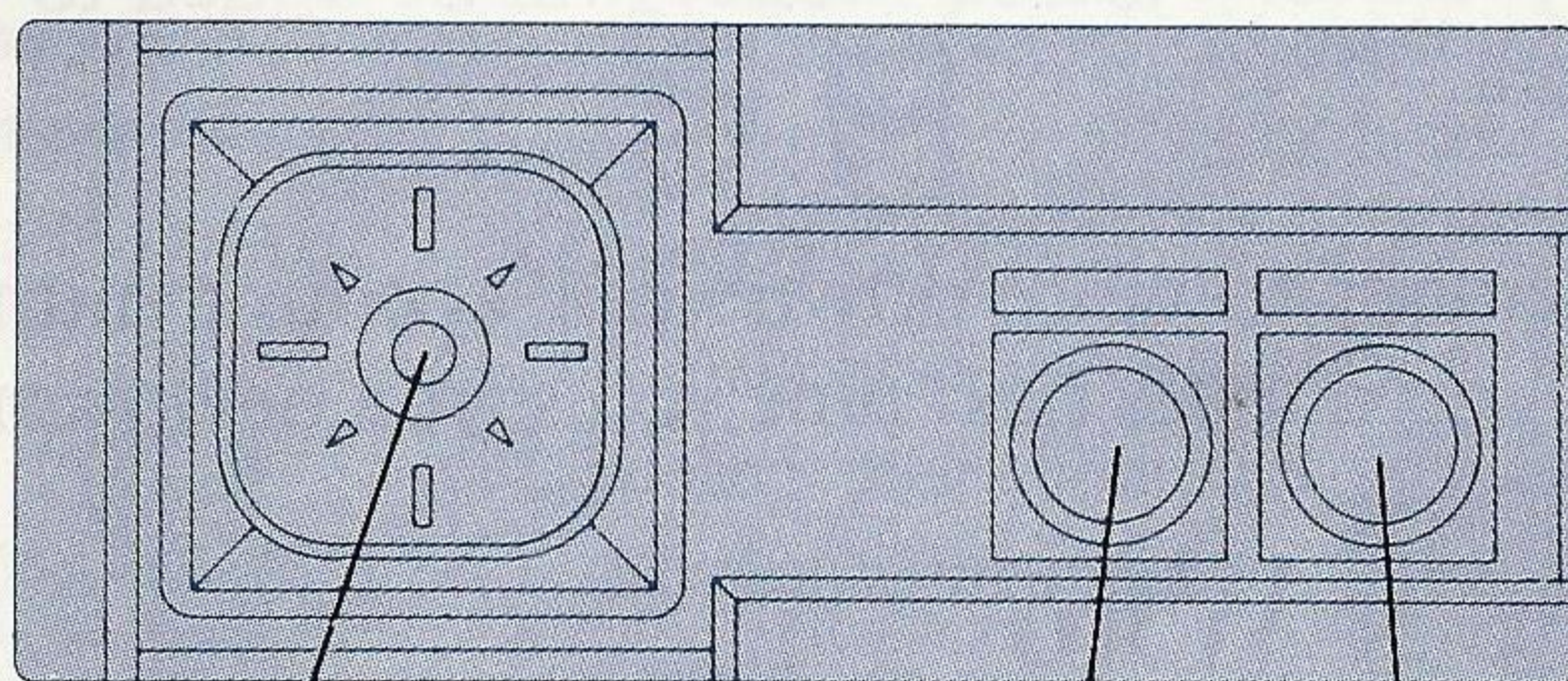
Once you've entered Zule, you'll have to climb the stairs – attacking Roamers as you go -- and try to make it to the top.

There, at the top of Zule, you'll have one last assignment. Destroy Gorza.

With Gorza's power depleted, the rest of the ghosts will also be powerless. The city will return to normal. And your name will go down as one of the city's greatest heroes.

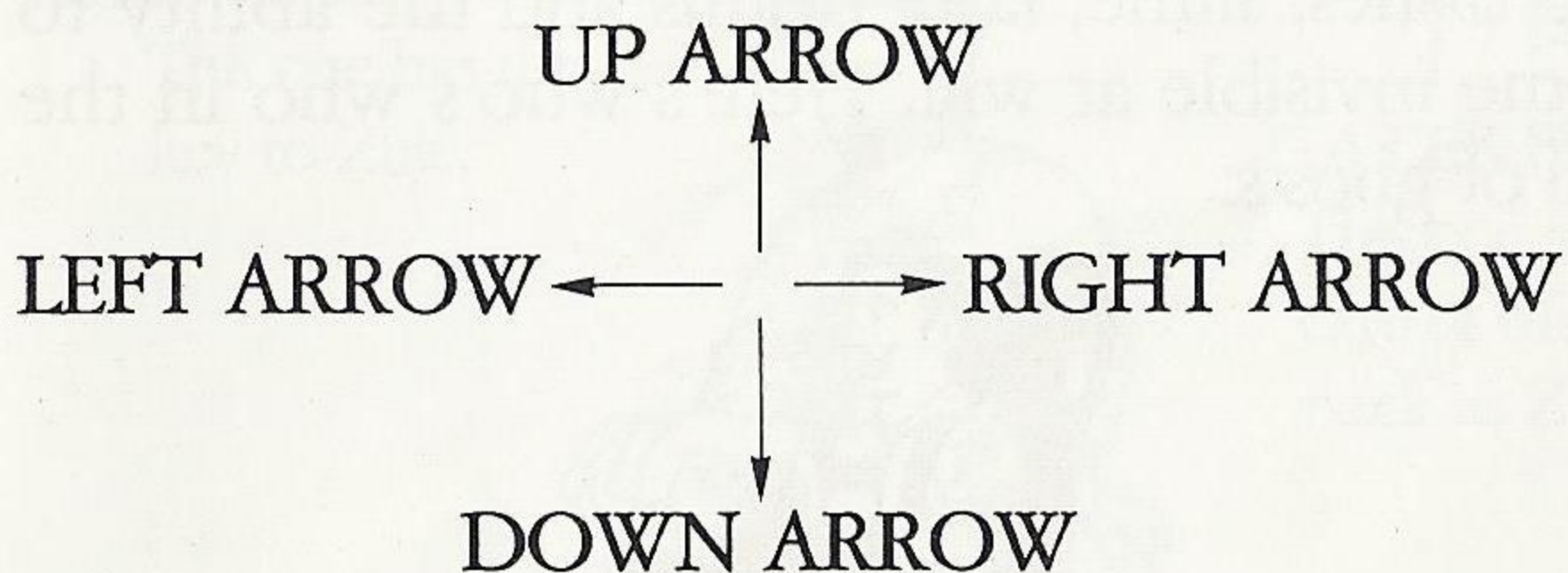
Taking Control

The following illustration shows you the control points on your SEGA SYSTEM control pad. Throughout this instruction book we will refer to these controls by the names indicated in this illustration.



ARROW CONTROLLERS

①
②
BUTTONS



Money, Money, Money.

Busting ghosts is big business. And, like any big business, it requires big bucks.

At the beginning of the game you can borrow up to \$10,000 – to use for purchasing cars and equipment. You'll be given your own bank account. And every time you bust a ghost, money will be added to your account.

Remember to write down your account number. You'll need it the next time you start a new game.

Who's Who

You're a Ghostbuster. Armed with a souped-up car, special ghostbusting equipment and lightning reflexes.

And you're after those ghosts. Who are armed with flying dishes, slime, laser beams and the ability to become invisible at will. Here's who's who in the world of ghosts:





ROAMERS
They like to hit the streets. And throw dishes.



MARSHMALLOW MAN

A result of all the ghosts pooling their efforts. To make one gargantuan monster.



SLIMERS
Friends of the ROAMERS. But a lot faster.



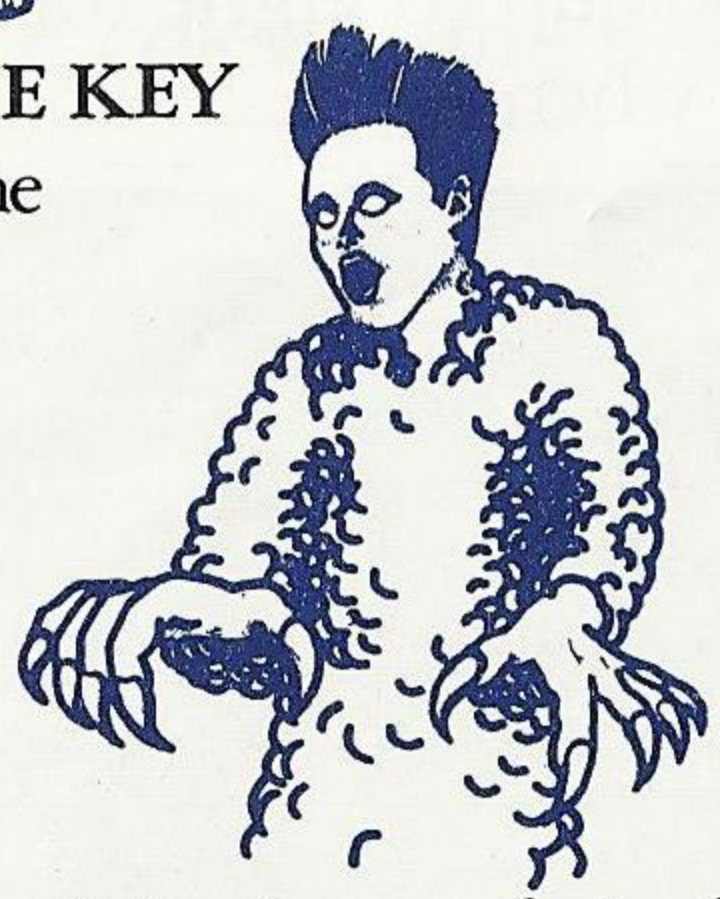
MASTER OF THE KEY

This one has the key to Zule.



GATEKEEPER

This one takes care of things back at Zule.



GORZA - This one's in charge of all of them. Armed with deadly laser beams, he's more dangerous than any of them.

What's What

Good ghostbusters must be familiar with the tools of the trade. And they must know which equipment is the most important to obtain when funds are limited.

Here's what you can buy with your hard-earned money. But remember, fancy equipment is no substitute for a quick eye and a steady hand.

Cars

ECONOMY -- Holds up to six tools. Very light. Slips a long way when hit. \$2,000
HEARSE -- Holds up to nine tools. Medium weight. Slips some when hit. \$4,800
COMMON -- Holds up to eleven tools. Heavy. Only slips a little when hit. \$6,000
SPORTS -- Holds up to eight tools. Very heavy. Hardly slips at all when hit. \$12,000



How to choose your car.

1. Using the ARROW CONTROLLER, point to the car you want.
2. Press BUTTON 1 or 2 to make your final selection.

How to drive your car.

Use the ARROW CONTROLLER.

Equipment

PK ENERGY DETECTOR -- Lets you know ahead of time when a building you're near is going to be hit by ghosts. The color of the building will change to purple. \$400

MARSHMALLOW SENSOR -- Tells you if the Marshmallow Man is coming to a building near you by changing the color of the building to white. \$800

IMAGE INTENSIFIER -- Ghost images become clearer. \$800

SUPER PK ENERGY DETECTOR -- Works just like the regular PK ENERGY DETECTOR, only better. Because it works for the entire city. No matter *where* you are. \$1,200

SUPER MARSHMALLOW SENSOR -- Works just like the regular **MARSHMALLOW SENSOR**. Except that you don't have to be near the building.

..... \$2,000

GHOST VACUUM -- Use this to scarf up stray ghosts while you're driving. \$600

GHOST BAIT -- Use it to attract ghosts to your area. And to prevent them from uniting to form a Marshmallow Man. The good thing about this stuff is that you can use it over and over -- up to five times. \$400

GHOST TRAP -- You can use this to capture ghosts. Then you've got to take it back to headquarters to empty it. \$500

HIGH CAPACITY TRAP -- Works like the regular **GHOST TRAP**. But you can capture three times as many ghosts before you have to empty it. \$2,500

LASER CONFINEMENT SYSTEM -- With this handy little item you don't have to keep running back to headquarters every time you fill your traps. The ghosts will automatically enter LASER CONFINEMENT and your traps will be perpetually empty. \$8,000

SUPER ION BEAM -- This makes your ghost-killing Ion Beams last a lot longer. \$3,000

GHOST PARALYSIS SYSTEM -- Use this to slow the ghosts down. \$3,500

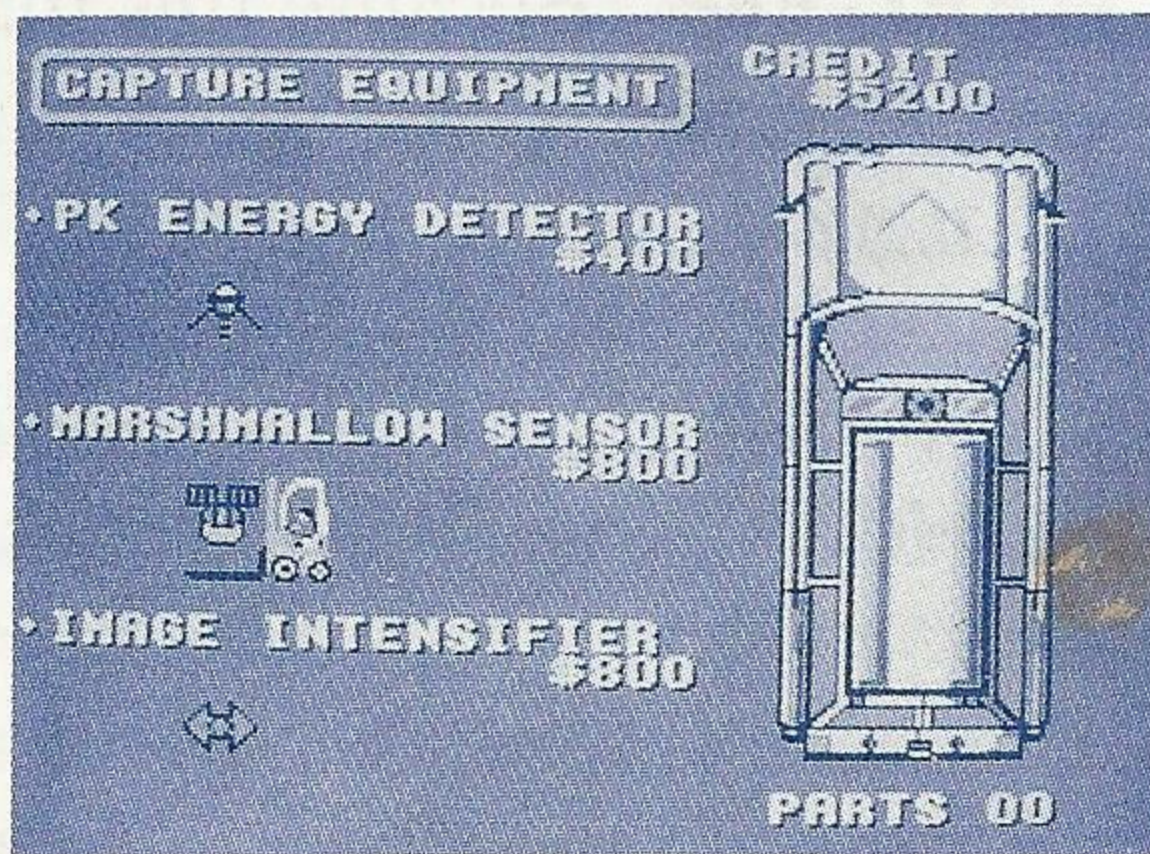
TURBO CHARGER -- Because this makes your car run faster, you can get to the scene of the crime much faster. \$4,500

SUPER GHOST VACUUM -- A souped-up version of the regular GHOST VACUUM. \$3,200

DEFENSIVE WALL -- This is a great item for dire emergencies. Place it in the middle of the road to keep ghosts, gatekeepers and key masters from passing through. But use it wisely. Because it only works once in each game. \$1,500

How to choose your equipment.

1. Using the ARROW CONTROLLER, move the forklift to the tool you want.
2. Press BUTTON 1 to put the tool on the forklift.
3. Using the ARROW CONTROLLER again, move the forklift back to your car.
4. Press BUTTON 1 again to move the tool from the forklift into your car.
5. Repeat the above sequence to choose another tool.
6. When you are finished selecting all your tools, press BUTTON 2 to start the game.

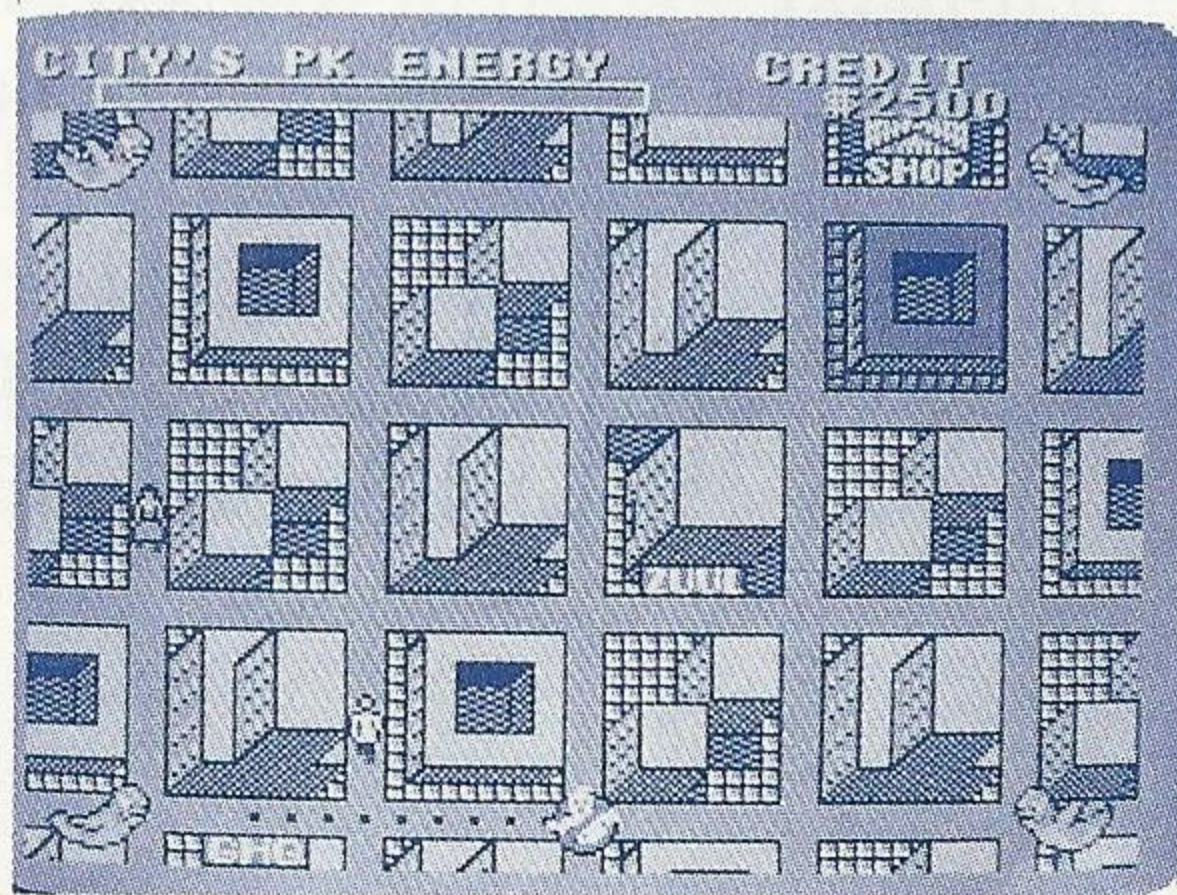


How to use your equipment.

Press BUTTON 2.

The Shop

In the portion of the map, you'll notice THE SHOP. It's always open. So if you wish to purchase any equipment mid-game, just go to THE SHOP.



GHQ (Ghostbusters Headquarters)

From time to time throughout the course of the game, you'll need to return to Ghostbusters Headquarters. You'll find it in the lower left-hand portion of the map.

Return to GHQ when:

- o You've lost Ion Beam power.
- o Your ghost traps are full.
- o You have only one man left.

PK Energy Level Meter

As more and more ghosts infiltrate the city, they raise the level of PK (Psycho-Kinetic) energy. So keep an eye on the PK ENERGY LEVEL METER (located in the upper left-hand section of the screen). It will give you a good idea of who's winning. You or the ghosts.

As the PK energy level goes up, the meter will change from blue to yellow to red. The following events cause the PK level to increase:

- o The passage of time.
- o When ROAMERS enter the temple of Zule.
- o When ghosts leave a building before you have a chance to get them.

Four Games In One

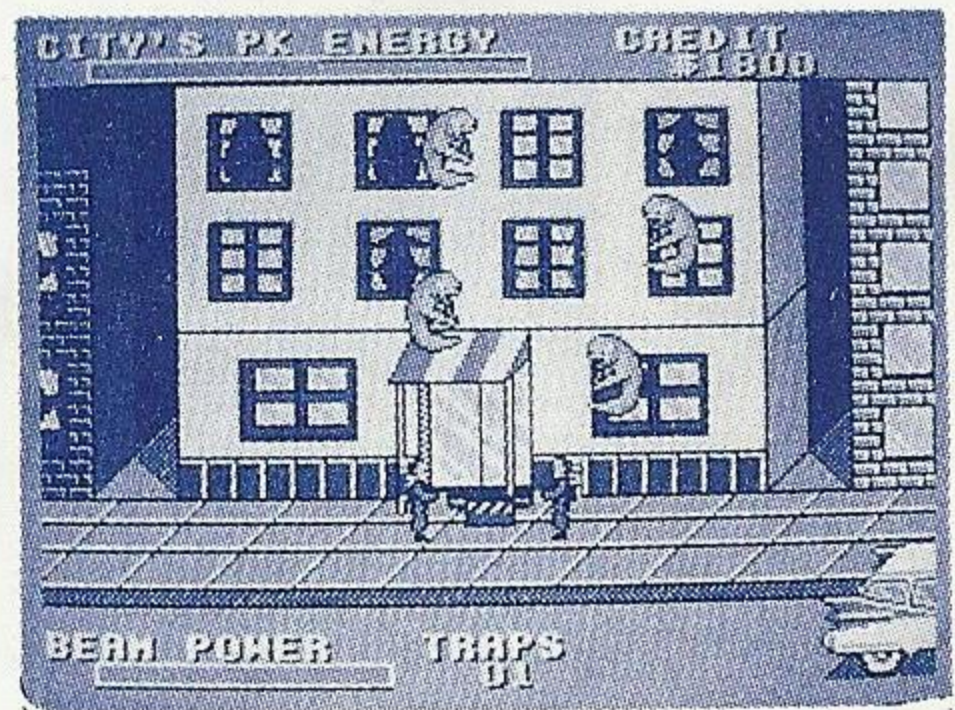
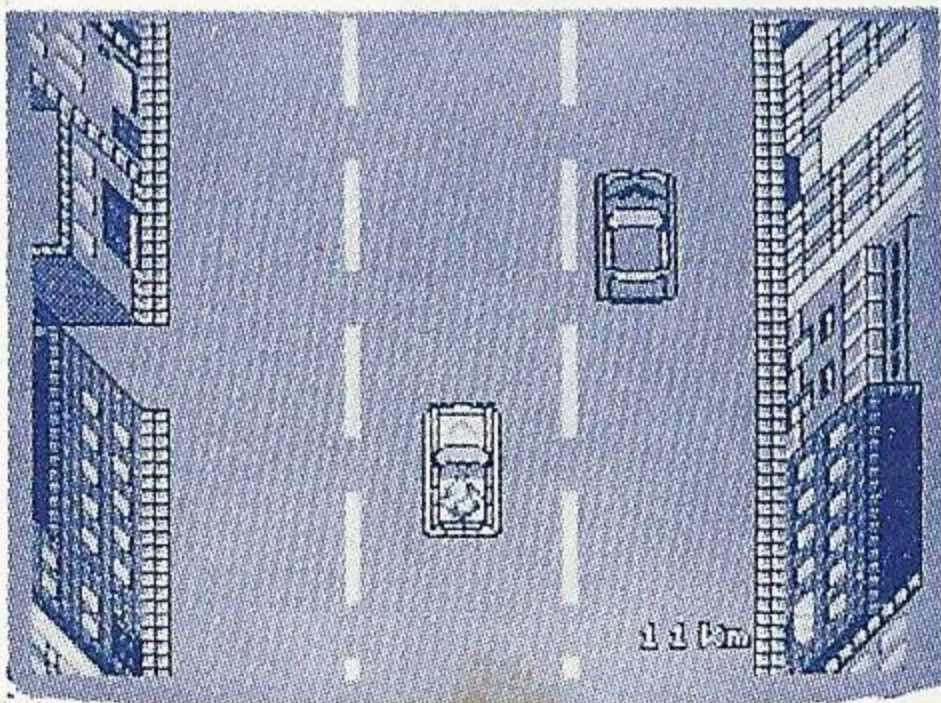
GHOSTBUSTERS is actually four games in one. Each one requires a little different strategy. Slightly different skills. And a thorough knowledge of your controller.

1. Search & Destroy

Search your map for blinking buildings. When you see one, head for it.

Once you get to the building:

1. Place the player in front of the building.
2. Press the UP ARROW.
3. Press BUTTONS 1 and 2 to get both ghostbusters out of the car.



Busting Ghosts

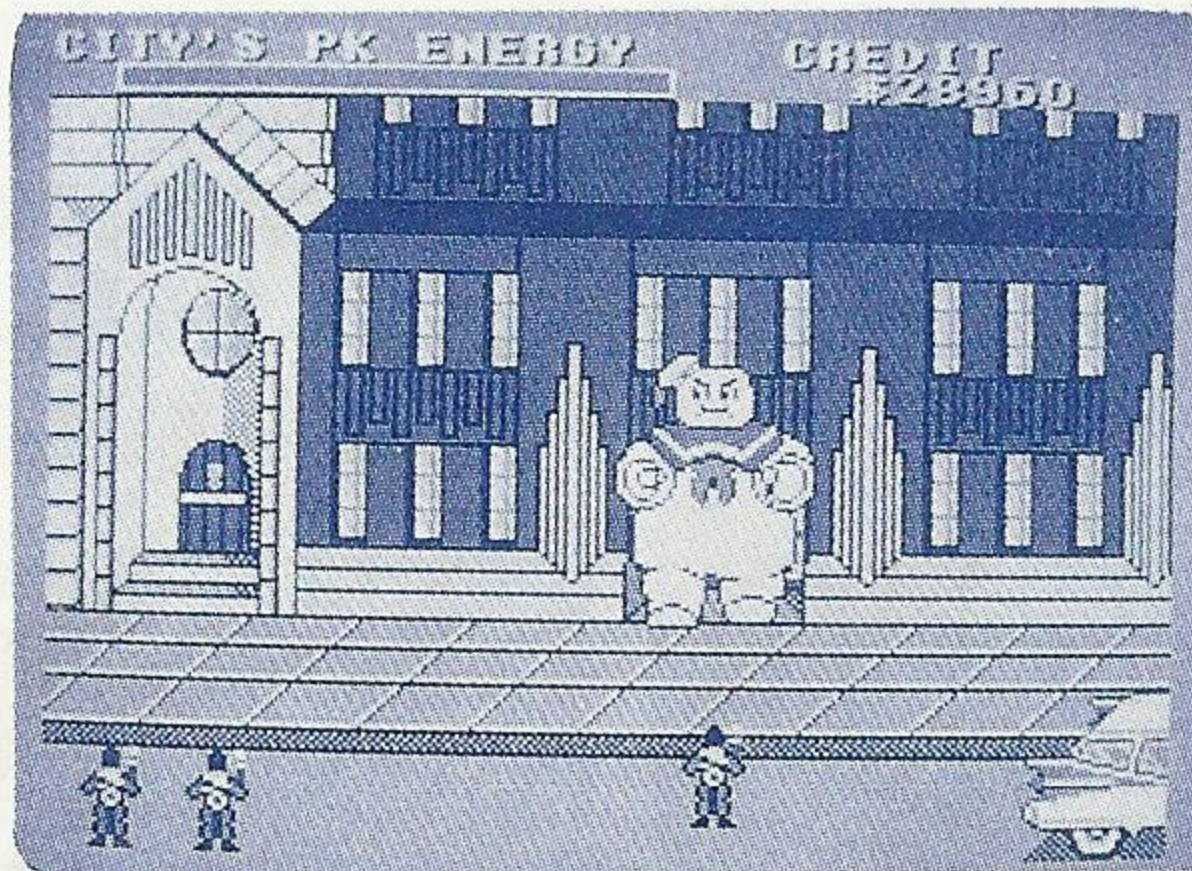
1. Use the ARROWS to position the ghostbusters.
2. Press BUTTON 2 to shoot the Ion Beams.
3. Try to trap the ghosts *in between* the two Ion Beams.
4. Then press BUTTON 2 again to catch them.

NOTE: When you've trapped all the ghosts in the building, the scene will return to the map.

2. Sneaking Past The MARSHMALLOW MAN

If you have more than \$10,000 at the time the PK energy meter turns to red, you'll go on to confront the Marshmallow Man.

In order to get into the temple of Zule, you'll need to sneak at least two out of three ghostbusters past this gargantuan guard. Here's how to do it.



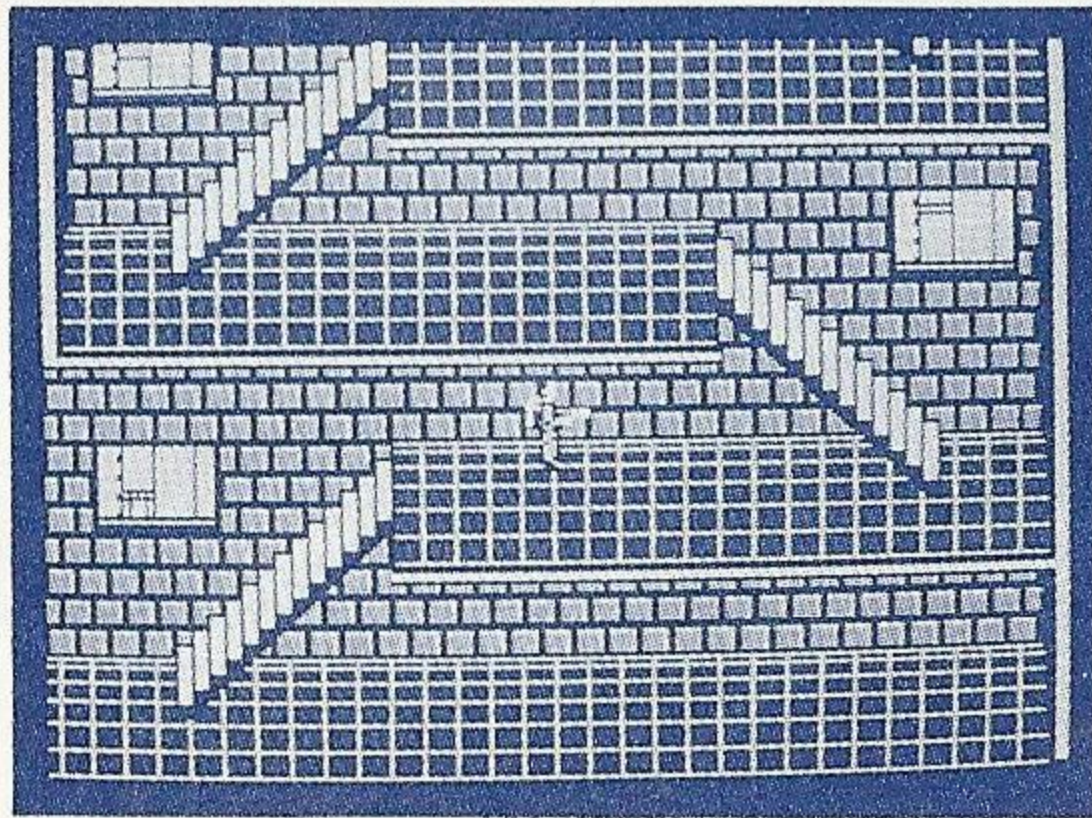
Using all eight positions of the ARROW CONTROLLER, maneuver your men, one by one, past the Marshmallow Man.

NOTE: Don't try to go through his legs. It's impossible. Go for the sides instead.

3. Climbing The Stairs Of ZULE

The stairs leading up to Zule are infested with nasty ROAMERS. They'll try to slime you. And even throw plates at you. Don't let them.

If you get even one of your players to the top of the stairs, you'll be able to go on to confront Gorza.



To move your players:

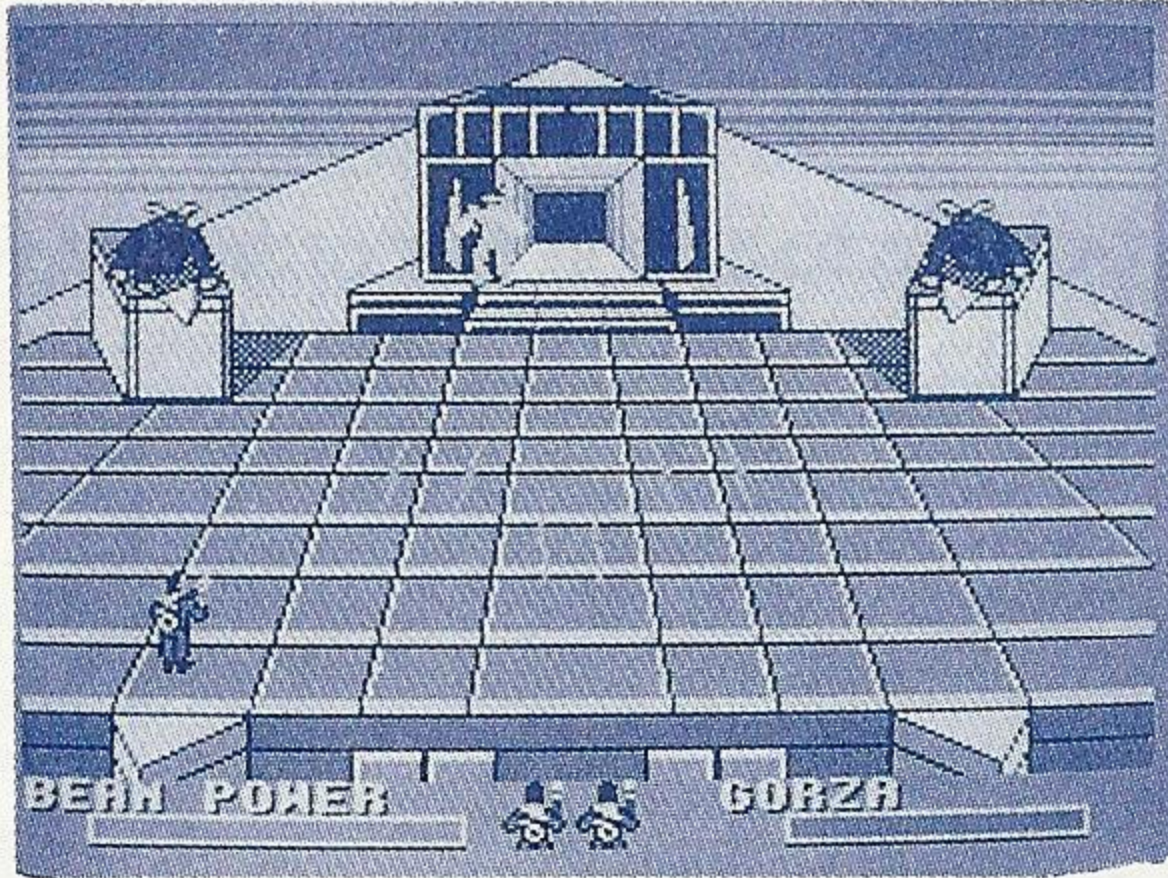
Use all eight positions on the ARROW CONTROLLER.

To shoot ghosts with your Super Ion Beam:

1. Press BUTTON 1 for diagonal shots.
2. Press BUTTON 2 for side shots.

4. Destroying GORZA

Congratulations! You've made it to the last leg of the job. Now all you have to do is destroy Gorza. Which is easier said than done. Here's how to do it:



1. Use the **ARROWS** to move your ghostbuster.
2. Use **BUTTONS 1 and 2** to shoot your Super Ion Beams.

Oops. Try Again.

In each of the above sections of the game, the rules for ending the game are a little different.

In the 1st Part – The game is over when the **PK ENERGY METER** turns red and you don't have more than \$10,000 in your account.

In the 2nd Part -- The game is over when two ghostbusters have been touched by the Marshmallow Man.

In the 3rd Part -- The game is over when three ghostbusters are touched by ROAMERS or SLIMERS or hit by flying plates.

In the 4th Part -- the game is over when all three ghostbusters have been killed. This can happen in any of the following ways:

- o The Ion Beam loses power.
- o A ghostbuster's hit by Gorza's beam.
- o A ghostbuster's hit by the Gatekeeper or the Master of the Key.

Know The Score

In GHOSTBUSTERS, your "score" is added to – or subtracted from – your bank account. Here's how it works:

Money added to your account:

When you prevent ghosts from transforming into a
 Marshmallow Man \$2,000
 When you vacuum up a ROAMER \$ 200

Money subtracted from your account:

While you are touching the Gatekeeper and
 the Master of the Key \$10 per time unit
 When your car slips all the way back \$1,000
 When the Marshmallow Man attacks a
 building \$4,000
 When you purchase an item from THE
 SHOP \$400 - \$8,000
 (See Car and Equipment, page 8.)

Helpful Hints

- o Be selective in purchasing your equipment. You'll quickly learn which items are worth the money. And which ones aren't.
- o Learn to maneuver the Ion Beams quickly and accurately. It's the only way to beat these guys.
- o If you purchase both regular and High Capacity GHOST TRAPS, the High Capacity traps will be used first.
- o Look for the Marshmallow Man when the PK ENERGY METER turns to red.

Scorebook

Name					
Date					
Score					

Name					
Date					
Score					

Name					
Date					
Score					

Name					
Date					
Score					

Scorebook

Name					
Date					
Score					

Name					
Date					
Score					

Name					
Date					
Score					

Name					
Date					
Score					

Handling The Mega Cartridge™

- The Mega Cartridge is intended exclusively for the Sega System.™
- Do not bend, crush or submerge in liquids.
- Do not leave in direct sunlight or near a radiator or other source of heat.

90-Day Limited Warranty

Sega® Card/Cartridge

To validate the following 90-day limited warranty, your sales slip or proof of purchase should be retained at time of purchase and presented at time of warranty claim.

90-Day Limited Warranty

Sega of America, Inc. warrants to the original consumer purchaser that this Sega Card™/Cartridge™ shall be free from defects in material and workmanship for a period of 90 days from the date of purchase. If defect covered by this warranty occurs during this 90-day warranty period, Sega will repair or replace the defective card/cartridge, at its option, free of charge.

This warranty does not apply if the defects have been caused by negligence, accident, unreasonable use, modification, tampering or any other causes not related to defective materials or workmanship.

To receive fast, reliable service, call the Sega Customer Service Department at the following numbers:

Outside California: 800-USA-SEGA

• Inside California: 415-742-9300

Our Customer Service Department is in operation from 9:00 AM to 5:00 PM (Pacific Time), Monday through Friday. *Do not return your Sega Card/Cartridge to your retail seller.*

Sega's service center is located at the following address:

Sega of America, Inc.

Warranty Repair

573 Forbes Blvd.

South San Francisco, CA 94080

Limitations On Warranty

Any applicable implied warranties, including warranties of merchantability and fitness for a particular purpose, are hereby limited to ninety days from the date of purchase and are subject to the conditions set forth herein. In no event shall Sega of America, Inc. be liable for consequential or incidental damages resulting from the breach of any express or implied warranties.

The provisions of this warranty are valid in the United States only. Some states do not allow limitations on how long an implied warranty lasts or exclusion of consequential or incidental damages, so the above limitations of exclusion may not apply to you. This warranty provides you with specific legal rights. You may have other rights which vary from state to state.

Now, there are no limits.[®]

SEGA[®]

SEGA OF AMERICA, INC., 573 Forbes Blvd., South San Francisco, CA 94080, (415) 742-9300

A CSK GROUP COMPANY

Printed in Japan

© 1987 SEGA OF AMERICA, INC.