



Sony Imagesoft, 2100 Colorado Avenue, Third Floor, Santa Monica, CA 90404

PRINTED IN JAPAN

EmuMovies



**WARNING: PLEASE READ THE ENCLOSED CONSUMER INFORMATION AND PRECAUTIONS BOOKLET CAREFULLY BEFORE USING YOUR NINTENDO HARDWARE SYSTEM OR GAME PAK.**



THIS OFFICIAL SEAL IS YOUR ASSURANCE THAT NINTENDO HAS APPROVED THE QUALITY OF THIS PRODUCT. ALWAYS LOOK FOR THIS SEAL WHEN BUYING GAMES AND ACCESSORIES TO ENSURE COMPLETE COMPATIBILITY WITH YOUR NINTENDO ENTERTAINMENT SYSTEM. ALL NINTENDO PRODUCTS ARE LICENSED BY SALE FOR USE ONLY WITH OTHER AUTHORIZED PRODUCTS BEARING THE OFFICIAL NINTENDO SEAL OF QUALITY.



SONY IMAGESOFT  
2100 COLORADO AVENUE  
SANTA MONICA, CA 90404  
FOR QUESTIONS OR COMMENTS  
ABOUT THIS OR OTHER SONY  
IMAGESOFT PRODUCTS  
CALL (310) 449-2300.

# CONTENTS

NAMES OF CONTROLLER PARTS .....	2
INTRODUCTION .....	4
STARTING UP .....	5
GAME CONTROLS SUMMARY .....	6
MAIN GAME SCREEN .....	7
PICK UPS .....	8
SCENES .....	9

LICENSED BY

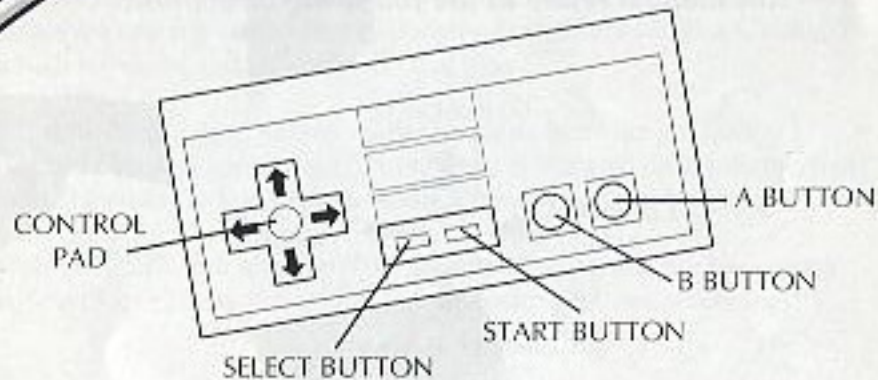
**Nintendo**

NINTENDO AND NINTENDO ENTERTAINMENT SYSTEM ARE REGISTERED TRADEMARKS OF NINTENDO OF AMERICA, INC.

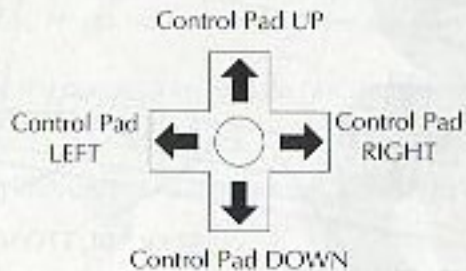
## PRECAUTIONS

- 1) Always turn the power off before inserting or removing the Game Pak from your Nintendo Entertainment System.
- 2) This is a high-precision game. It should not be stored in places that are very hot or cold. Never hit it or drop it. Do not take it apart.
- 3) Avoid touching the connectors, and do not get them wet or dirty. Doing so may damage the game.
- 4) Do not clean with benzene, paint thinner, alcohol or other such solvents.

## NAMES OF CONTROLLER PARTS



*This manual refers to the following directions:*



You're Jack Slater: the greatest movie hero of all time... And you've just been cast in the biggest adventure of your life. It all began when Danny Madigan got hold of a magical movie ticket that somehow blasted him onto the silver screen. Suddenly, this kid's your faithful sidekick and the two of you are making big-screen history dodging bullets, crashing cars, flying through windows and taking on the bad guys.

But something's gone wrong! Super bad guy, Benedict got Danny's magical ticket and transported himself and his criminal crew into the "real" world. Needless to say, the real world is now in real trouble!

Only you, Jack, can save the day. So come on—work your big-screen magic and give us another one of your patented Hollywood endings!!!

## STARTING UP

Make sure your Nintendo Entertainment System is turned off. Put the Game Pak into the system and press the POWER BUTTON on the front of your Nintendo machine. After the game introduction, press the START BUTTON at the title screen.

## GAME CONTROLS SUMMARY

**TO WALK RIGHT OR LEFT:** Press the Control Pad LEFT or RIGHT.

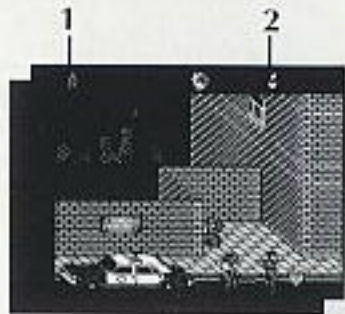
**TO CROUCH:** Press the Control Pad DOWN.

**TO KICK:** Press the A Button.

**TO JUMP:** Press the B Button.

**TO PAUSE GAME:** Press the Start Button.

# MAIN GAME SCREEN



## 1: LIVES

This shows how many lives you currently have. You begin each game with five lives.

## 2: HEALTH

This shows your current health status represented in heart icons.

# PICK-UPS

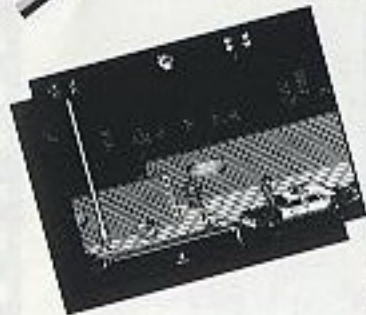
## HEARTS

Collect Hearts to replenish your health.



# SCENES

The following is a list of the different scenes that you must survive as The Last Action Hero.

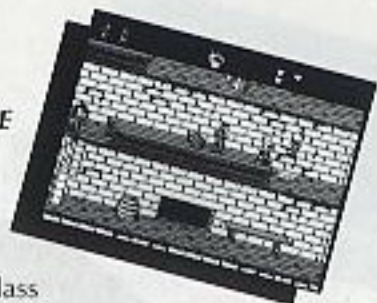


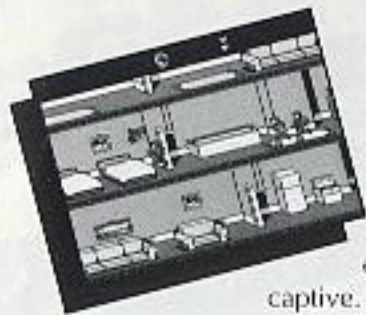
## **SCENE 1: CHRISTMAS IN L.A.**

Merry Christmas!!! Andrew is being held captive by The Ripper on the rooftop of an L.A. elementary school. Santa Claus must have filled their stockings with coal because the cops are on the wrong side of the law. Use your brawn to bust up the Hollywood police force and SWAT team. And don't forget to rescue Andrew.

## **SCENE 2: A MEDIEVAL NIGHTMARE**

Put on your Robin Hood garb because it's off to the chapel for a heaping helping of medieval mayhem. Claudius is waiting by the altar—kick him through the stained-glass window, then get ready to bust up his team of sword-wielding knights and straight-arrow archers. Stuff the chef on your way out and headeth downeth to the moteth where you'll find more guards, archers and the End of Level Nasty Guard. Have a blast!!!





### ***SCENE 3: A DATE WITH YOUR EX***

Ahh the memories! No time to reminisce—thugs have broken into your ex-wife's home and are now holding her captive. You must save her...well, you should save her. Dodge traffic and trucks to get into the house.



### ***SCENE 4: THE CAR CHASE***

How fast can you run??? Benedict has been seen speeding through the most rotten neighborhoods in the Big Apple. There's no room for stunts here. Keep your eyes on the road and take out this mobster motorcade. Ready...and ACTION!!!





### **SCENE 5: LEO'S FUNERAL**

Leo's gone, but there's no time to grieve. Somewhere inside this Mafia-infested hotel is a nerve gas bomb set to go off in minutes. Ride the glass elevators to the roof and watch out for machine-gun wielding Mafioso's...and stay clear of the goon-ridden helicopter.



### **SCENE 6: PREMIER NIGHT**

Congratulations are in order, but we'll have to wait until later, because among the flashbulbs and screaming fans awaits The Ripper...and he's got Meredith and Danny. Break through the mob and get inside the theatre. Watch out for the dead body in the manager's office, psycho candy girls, the Commissioner, guerrilla guards and of course, The Ripper.



### **SCENE 7: THE FINALE**

Bet you thought you'd be sitting center row with a soda in one hand and a big bag of popcorn in the other. Not!!! It's the grand finale...really wow your fans in this one. Here's all you've gotta do: Defeat Death. Then you can have your popcorn...with all the butter-flavored goop you want.

### **SONY IMAGESOFT WARRANTY**

Sony Imagesoft warrants to the original purchaser of this Sony Imagesoft product that this Game Pak is free from defects in material and workmanship for a period of ninety (90) days from the date of purchase. This Sony Imagesoft product is sold "as is," without expressed or implied warranty of any kind, and Sony Imagesoft is not liable for any losses or damages of any kind resulting from the use of this product. Sony Imagesoft agrees for a period of ninety (90) days to either repair or replace, at its option, free of charge, the Sony Imagesoft product. Send product postage paid, along with dated proof of purchase, to the address shown below.

This warranty shall not be applicable and shall be void if the defect in the Sony Imagesoft product has arisen through abuse, unreasonable use, mistreatment or neglect. THIS WARRANTY IS IN LIEU OF ALL OTHER WARRANTIES AND NO OTHER REPRESENTATIONS OR CLAIMS OF ANY NATURE SHALL BE BINDING ON OR OBLIGATE SONY IMAGESOFT. ANY IMPLIED WARRANTIES APPLICABLE TO THIS SOFTWARE PRODUCT, INCLUDING WARRANTIES OF MERCHANTABILITY AND FITNESS FOR A PARTICULAR PURPOSE, ARE LIMITED TO THE NINETY (90) DAY PERIOD DESCRIBED ABOVE. IN NO EVENT WILL SONY IMAGESOFT BE LIABLE FOR INCIDENTAL OR CONSEQUENTIAL DAMAGES RESULTING FROM POSSESSION, USE OR MALFUNCTION OF THE SONY IMAGESOFT SOFTWARE PRODUCT.

Some states do not allow limitations as to how long an implied warranty lasts and/or exclusions or limitations of consequential damages, so the above limitations and/or exclusions of liability may not apply to you. This warranty gives you specific legal rights, and you may also have other rights which vary from state to state.



SONY IMAGESOFT, 2100 COLORADO AVENUE, SANTA MONICA, CA 90404  
FOR QUESTIONS OR COMMENTS ABOUT THIS OR OTHER SONY IMAGESOFT PRODUCTS CALL (310) 449-2393.